

# ICT- and AI-based care service to convey affection and warmth through cutting edge technology

Written by the Welfare Policy Division, Gyeongsangnam-do



As an exemplary project for the Regionally Balanced New Deal approved by the Ministry of the Interior & Safety, we are slated to expand our AI-based integrated care service to 18 cities and guns, including Changwon. Artificial intelligence speakers and sensors installed for older adults living alone and for those with disabilities as well as for the vulnerable groups allow both constant emotional support and urgent response for emergency situations.



---

## Encounter between welfare and the quaternary industry

In order to foster the non-face-to-face industry, we have conducted AI-based integrated care services since 2019. While the spread of COVID-19 has impacted physical and mental wellbeing and has caused social isolation, depression and dementia, contact-free methods have become increasingly important—unfortunately, the conventional types of welfare face limitations.

Integrated care is devoted to helping people in need get back to normal after a hospital or nursing home stay by prioritizing community-based services, such as health care, recuperation, and housing. The advantages of artificial intelligence systems are anticipated to effectively meet their needs.

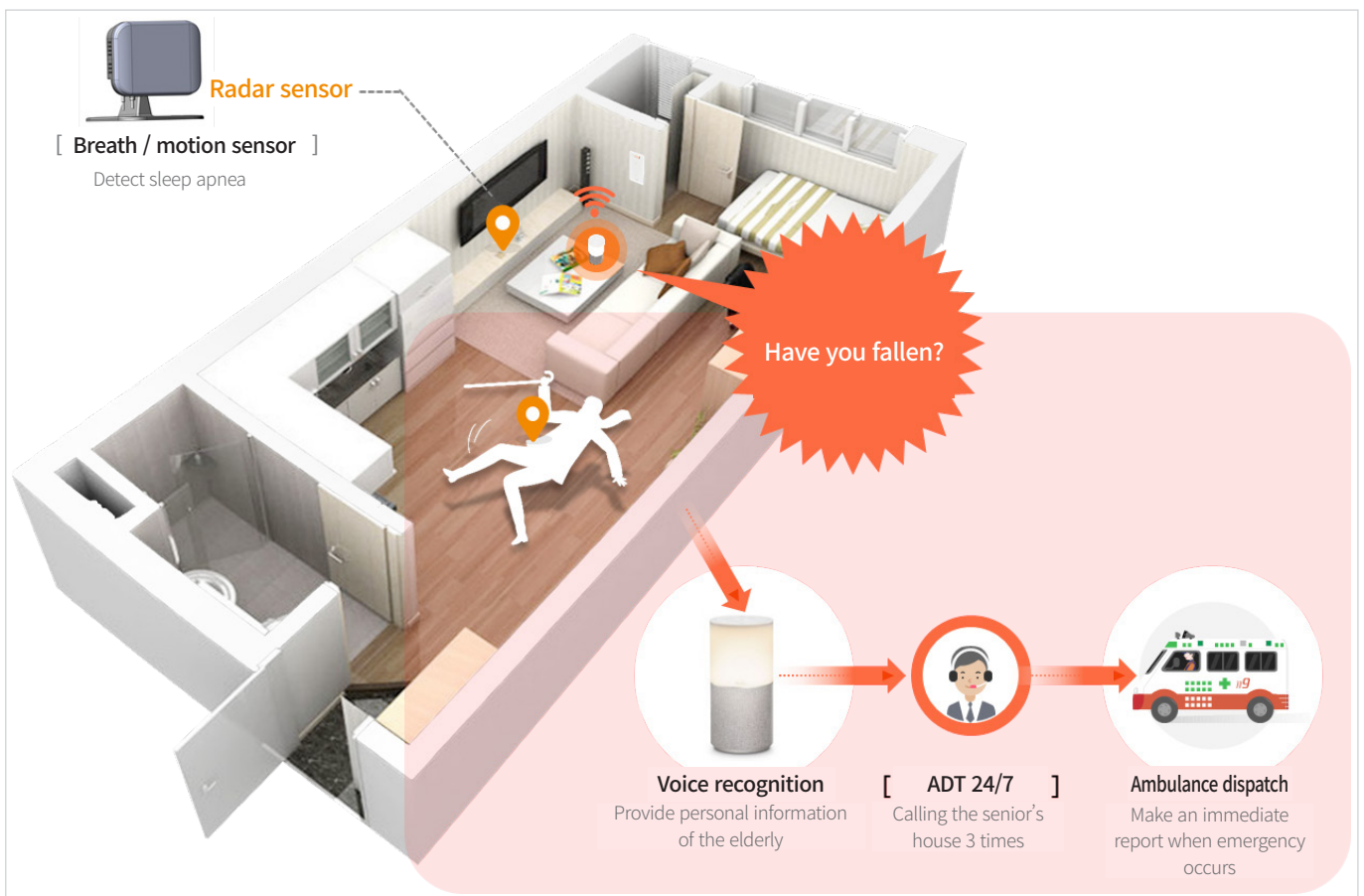
### Seniors talking to an artificial intelligence speaker



Artificial intelligence speakers distributed to elderly people living alone work just with voice recognition. “Ari, save me!”, an elder senior in his 70s living in Geoje who had shortness of breath and headache shouted to his speaker and soon an ambulance transported him to the hospital. A woman in her 70s in Changwon requested assistance via the speaker as she slipped on the bathroom floor and she was able to be rescued and taken to her room by the 119.

This year, we began to combine artificial intelligence speakers with sensors, which measure the subject’s respiration and pulse rates. If the elderly experiences breathing difficulties and is unable to ask for help to the speaker, the sensor will promptly transmit signals for 119 support, enabling 119 rescue within prime time

#### How lidar sensors work





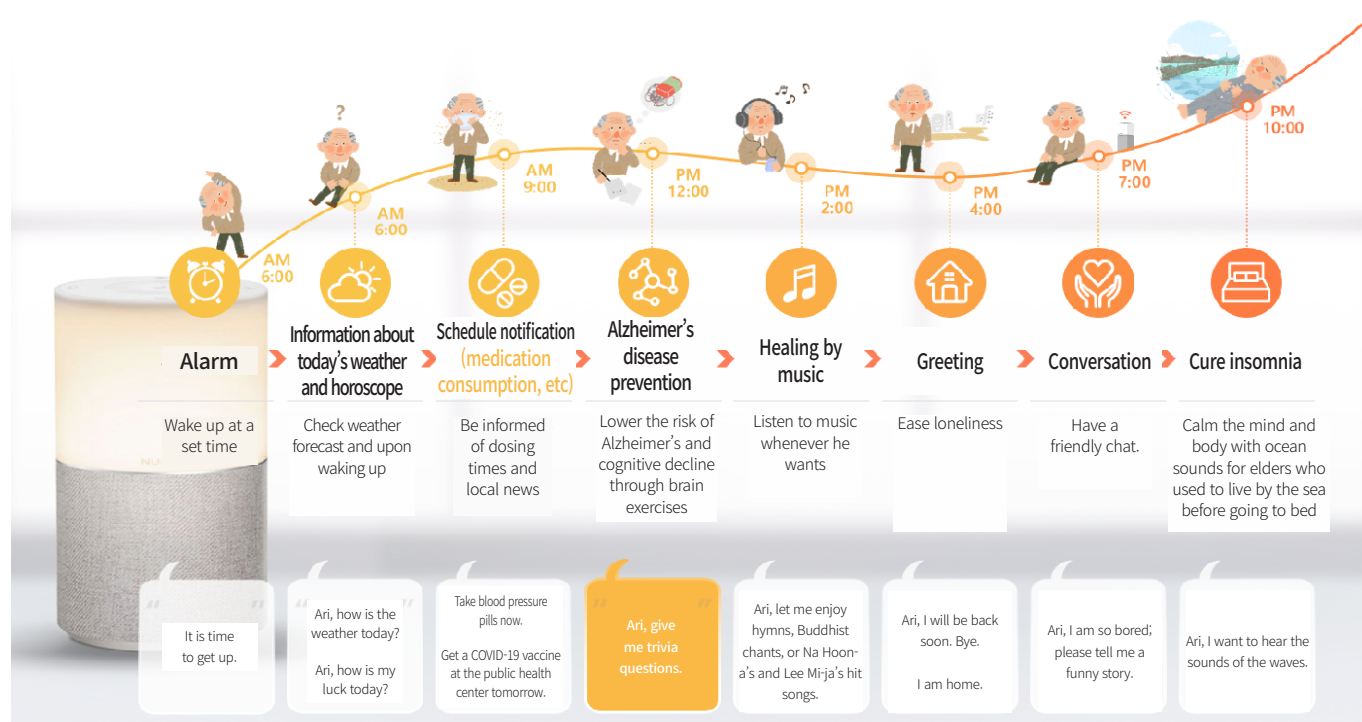
## Weather information, living guide, and meticulous care

Seniors start their morning off with a wake-up alarm from an artificial intelligence speaker. It informs them of the time to take medicines, the weather, and today's fortune. In addition, not only does it help avoid dementia and play music, but it also communicates with them—which livens them up. Treating it like a human, some users lay it to rest at night.

### Daily routine for aging adults using an artificial intelligence speaker

#### Emotional support

[Examples of services that an elderly receives from the artificial intelligence speaker]



## Realization of values beyond care

Our comprehensive care with artificial intelligence intends to fulfill values beyond caring—improving safety and the quality of life by preventing lonely deaths, transforming welfare paradigms with information and communications technology, and creating quaternary jobs. Our service will be further enhanced.